

On-Campus Master's Degree Programs



Kyla Saphir
M.S. in Early Childhood Education
Leading to Initial Type 04 Certification
and Bilingual/ESL Endorsement, 2012



Earning your master's degree at Erikson is the best preparation you can get for the career that lies ahead of you.

The work you've chosen—ensuring that the children of today grow up to be the healthy, happy, responsible, and productive adults of tomorrow—is not easy, and it couldn't be more important. You owe it to yourself to choose an education that's equal to the task.

An education that enables you to

- Gain a deep, research-based understanding of children birth to age eight,
- Challenge yourself as you examine your knowledge, actions, and assumptions,
- Join a close-knit community of professionals passionate about children and families, just like you are,
- Have the greatest impact you can on the lives of the children and families you serve, and
- Develop the skills to be a leader in a variety of early childhood fields.

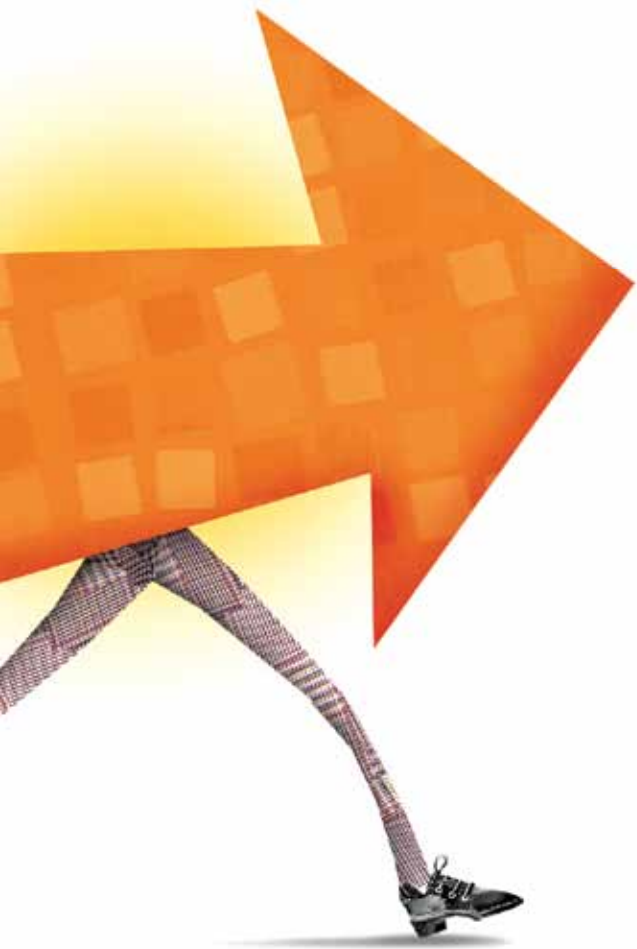
An Erikson education is all of this and more.



Learn how children develop

In an Erikson master's program, you'll learn how a child develops from birth to age eight and the contextual factors that shape development. You'll learn about specific developmental domains, including physical/motor, cognitive, social, emotional, and communicative/language, and how developmental processes weave these domains together.

You'll also learn how to integrate the knowledge you gain in order to form a picture of the whole child in the context of his or her family, community, and the critical institutions that increasingly play a role in children's lives: child care programs, schools, clinics, and social welfare services. And when you can see the whole child, you're much more able to make and execute strategies that support that child's optimal development.



And develop yourself as a professional

There's a second characteristic that sets Erikson apart from other master's programs, and that's its focus on you as a developing early childhood professional. This isn't flattery. It's recognizing that when you work with children and families, you enter into a relationship with them. You affect and are affected by the child, the family, and the contexts in which you and they develop. You yourself—your history, your assumptions, your expectations, your personality—become part of the shifting equation. To understand these complex sets of interdependencies enriches your experience. It also enables you to be a more effective and more skilled professional.

Developing yourself as a professional in this way requires deep knowledge of child development, skills honed through practice, and critical self-awareness. An Erikson education helps you deal with complexity, ambiguity, and diversity, conditions that a skilled professional grapples with daily in working effectively with culturally diverse families, children with varying abilities, and the variety of services designed to serve them.

At the heart of the Erikson experience is critical self-reflection, which begins when you enter an Erikson master's program and continues through your professional life. To develop it, you need both the opportunity for professional interaction and a mirror to help you see yourself and identify who you are professionally. The opportunity is a yearlong, closely supervised internship in a setting that complements your professional interests, draws on your knowledge, challenges your growth, and sharpens your skills.

The mirror is a concurrent, one-on-one faculty tutorial plus a small-group seminar. Both are settings in which to move beyond technique, to question, reflect on, fine tune, and develop yourself and your practice in a community of learners that you have come to know and that has come to know you.



Ross Jensen

M.S. in Child Development, 2011

M.S.W., Loyola University Chicago, 2012

Sarti Doshi

M.S. in Child Development, Child Life
Specialization, 2010

Child Life Specialist, Comer Children's Hospital
at the University of Chicago



Of course, there are any number of reasons to come to Erikson.

There is the inspired faculty, researchers and scholars whose names crop up whenever the subject is young children. If you take a moment to read through their profiles on our website at www.erikson.edu/faculty and look at some of their work, you'll understand why.

There is the tradition of diversity, of nourishing a community of students and faculty from many backgrounds and inclinations, united in their service to children and families who reflect the complexities and differences in American society.

There is the commitment to reflective professional growth; small classes and close relationships among faculty and students; the supportive professional network that includes many hundreds of contacts in early childhood, public education, social service, legal, and medical communities nationwide; even our location in the heart of Chicago, a hub for early childhood policy and advocacy.

There is the comprehensive child development curriculum, with knowledge taught through course work and practice, and learning through the framework of relationships.

All of these distinguish Erikson—and its graduates—from others in the field.



Barbara Spears
M.S. in Child Development, 2009
Child Developmental Specialist

We're confident that you will like what you see when you learn more about Erikson.

You'll find some basic information about our master's programs in the pages of this brochure, along with the fundamentals of how to apply and a few words about the career options available to you after graduation. More information—course descriptions, detailed faculty profiles, tuition and financial aid data, interviews with students and alumni—is on our website at *www.erikson.edu*.

Erikson offers three on-campus master's degree programs.

Master of science in child development

Master of science in child development/Master of social work (with Loyola University Chicago)

Master of science in early childhood education leading to initial Type 04 certification

Structure

All on-campus master's programs share three critical components: core course work, internship or field-work, and tutorials and seminars that allow you to integrate your experience and reflect on your role as a professional.

Course work

Erikson's curriculum gives you the most comprehensive, interdisciplinary understanding of child development of any program in the country. Core courses include relevant aspects of developmental psychology, neurobiology, anthropology, psychiatry, education, sociology, health, and social work. Adding a special focus of study—whether administration, early childhood special education, family services, infancy, bilingual/ESL, or child life—requires additional courses.

Internship

It's no surprise that an institution founded for practitioners should require its students to practice.

As a master's student, you will spend approximately 15 hours a week for a full academic year in an internship tailored to your career goals. You may be placed in a social agency, Head Start program, community college, public or private school, hospital, therapeutic program, city or regional governmental organization, child care center, or children's museum. Teacher candidates spend 10 weeks during the spring term student

teaching full-time in a primary classroom, completing a total of 300 hours. During the fall term and the remaining 5 weeks of the spring term, teacher candidates work in the same classroom for an additional 225 hours of internship.

Recent internship sites include

DuPage Children's Museum
Francis W. Parker School
Illinois Department of Children and Family Services
Juvenile Protective Association
Ounce of Prevention Fund
Perinatal Family Support Program of Evanston
Northwestern Healthcare
Positive Parenting DuPage
University of Chicago Children's Hospital
Virginia Frank Child Development Center

Tutorials and small group seminars

Tutorials and small group seminars, also known as integrative or supervision seminars, are the bridge between theory and practice. In biweekly, one-on-one tutorials with your faculty adviser and in weekly seminars with fellow students, you will have time to discuss your internship experiences and develop strategies and interventions to improve your professional skills.

Equally important, you will have a time and place for developing the habit of self-reflection, a critical tool that every Erikson student is asked to master.

Comprehensive examination

At the end of your program, you sit for a written comprehensive examination covering major content areas in child development and early education. The exam gives you an opportunity to synthesize and integrate all you have learned in your course work and internship.

A cohort program

To give you the advantages that come from belonging to a small community of learners, all Erikson master's programs use the cohort system. As a member of a day or evening cohort, you take most of your courses with the same group of students. Classes are offered year round in a regular sequence.

Length of study

You can enroll in the master's program as a two- or a three-year student. Dual degree students can choose between three-year or four-year options. You must complete all your degree requirements within five years of matriculation.

Online master's program

In addition to on-campus programs, Erikson offers a master of science in early childhood education online for educators with two to three years of full-time, post-baccalaureate experience in early childhood settings. To learn more about this option, visit www.erikson.edu/online.



A word about careers

When you complete what is widely considered the premier graduate program for the early childhood professional, your career options are wide open. What's more, a graduate degree from Erikson can place you among a small and highly sought-after group: practitioners who have both the depth of knowledge and the range of skills to change the way we educate and care for young children.

Below is a partial list of positions our alumni currently hold. As you scan it, you'll notice only two common threads: service to children and families and leadership. The majority of our alumni occupy positions of leadership or influence in their chosen area of practice.

- Director of Children and Youth Services, Salvation Army
- Bilingual Kindergarten Teacher, John B. Murphy Elementary School
- Co-founder, DuPage Children's Museum
- Healthy Steps Specialist, Infant Welfare Society of Chicago
- Director of Child Life and Family Education, University of Chicago Children's Hospital
- Instructor, Madison Area Technical College
- President, National Black Child Development Institute
- Executive Director of Professional Development, Chicago Public Schools
- Child and Family Therapist, The Bridge Youth and Family Services
- Founder, Project Match
- Principal, Los Angeles County School District
- Researcher, High/Scope Foundation
- Disabilities Manager, Casa Central
- Chief Program Officer, Action for Children
- Third Grade Teacher, International School of Uganda
- Family Literacy Coordinator, Orange County Public Schools
- Psychotherapist, The Barr-Harris Children's Grief Center
- Director of Children and Youth Services, McGuire Air Force Base
- Faculty Member, Harold Washington College
- Social Worker, Northwest Suburban Special Education District
- Curriculum Coordinator, Chicago Commons
- Supervisor of Foster Parent Training, Catholic Charities
- Literacy Officer, American Library Association
- Director of Programs, Positive Parenting DuPage
- Child Life Specialist, Children's Medical Center of Dallas





Julissa Portales Banzon
M.S. in Child Development, 2003
Case Coordinator, Office of Refugee
Resettlement Case Coordination Program

Master's degree program and specialization options

For the most complete and up-to-date description of the degree requirements for each master's program and complete course descriptions, visit www.erikson.edu.

M.S. in child development

38 credit hours

This program offers a comprehensive curriculum in early childhood development, the fundamentals that everyone needs to be effective working with or for children and families. It is excellent preparation for professional or leadership roles in the full range of disciplines and systems that serve children and families, including care and education, social service, mental health, policy-making and analysis, health care, and the arts.

You can complete the child development program in two or three years. Earning one of the five specializations Erikson offers in this program requires additional course work.

Course work

- C410 Social and Historical Perspectives on Early Care and Education (3 credit hours)
- C413 Adult Education and Supervision (2 credit hours)
- C421 Human Development I: Psychosocial Development in Infancy and Childhood (3 credit hours)
- C422 Human Development II: Psychosocial Development from Early Adolescence through Adulthood (3 credit hours)
- C425 Physical Growth and Development (3 credit hours)
- C426 Development of Cognition, Language, and Play I: Cognitive Development (3 credit hours)
- C427 Development of Cognition, Language, and Play II: Language Development (3 credit hours)
- C432 Family and Culture (3 credit hours)
- C439 Child Assessment (2 credit hours)
- C490 Research Methods (3 credit hours)

Internship, tutorial, and seminar

- C440 Internship and Tutorial I (3 credit hours)
- C441 Internship and Tutorial II (3 credit hours)
- C450 Integrative Seminar I (2 credit hours)
- C451 Integrative Seminar II (2 credit hours)

Specialization in administration

42 credit hours

Intended for administrators and supervisors of early childhood programs, this specialization explores planning and implementing administrative systems that effectively carry out an organization's mission. You will examine effective organizational development, study administrator's ethical responsibilities, and learn methods of implementation, supervision, budgeting, program evaluation, time management, and conflict resolution. The specialization prepares students to seek the Illinois Director Credential.

To earn the administration specialization, you complete the core child development curriculum, an internship in an administrative setting, and one additional course.

- A308 Administration of Early Childhood Programs (4 credit hours)

Specialization in child life

44 credit hours

Chronic or terminal illness, disability, injury, surgery, or trauma presents a unique set of challenges to a young child. The work of the child life specialist—advocating for children and families and helping them face the unknown, making the complex understandable, and facilitating the optimal development of children whose medical treatment has deprived them of the typical opportunities for learning and growth—requires skill and sensitivity.

Erikson's child life specialization will help you develop both through focused course work and an internship at one of the Chicago area's many top-ranked medical facilities. Students admitted to the child life specialization take two courses in addition to the core child development curriculum and complete a child life internship.

- C470 Child Life: Intervention, Advocacy, and Education within the Pediatric Healthcare System (3 credit hours)
- C471 Child Life: Theory, Research, Methods, and Scope (3 credit hours)



Note: Before admission to the child life specialization, you must have 100 hours of experience in a hospital. We strongly recommend that you have this completed at the time you submit your application to the child life program.

Specialization in family services

44 credit hours

Knowing how to work with families and the many structures and systems that support them can be as important as knowing how to work with young children. This specialization explores the social, legal, and political contexts in which young children and their families live, ranging from the many configurations of families and communities to the welfare system, early intervention, medical and mental health, courts, and schools.

To earn your master's in child development with a specialization in family services, you complete the child development program, substituting three specialization courses for core courses, and also take two additional courses. The specialization includes an internship focusing on developing the practice and reflection skills necessary to work with children and families across a complex range of contexts and systems.

- F412 History of Social Welfare and Social Policy (3 credit hours; taken instead of C410)
- F415 Children, Families, and the Law (3 credit hours; taken instead of C413)
- F423 Human Behavior in the Social Environment (3 credit hours; taken instead of C422)
- F436 Working with Children, Families, and Groups (3 credit hours)
- F438 Working with Children with Special Needs and Diverse Abilities and their Families (2 credit hours)

Specialization in infancy

44 credit hours

In the past two decades, research and new theoretical frameworks have greatly expanded our knowledge and understanding of infancy and its importance. Recent legislation and policy initiatives have created an enormous demand for services for infants and their families.

The Irving B. Harris Infant Studies Program at Erikson prepares professionals for the complex role of infant/family specialist, working with infants and families in the context of their community. Students may select a methods track of either prevention/early intervention or child care. The course work in the prevention/early intervention track and an early intervention internship prepare you to apply for the State of Illinois's early intervention credential.

To earn your master's in child development with a specialization in infancy, you complete the core child development curriculum, which includes a focus on infancy, along with an internship in a setting that serves infants and their families. In addition, you take the following three courses:

- I392 Infant/Toddler Screening and Assessment (3 credit hours)
- I397 Prevention/Early Intervention Methods A (1.5 credit hours)
- I398 Prevention/Early Intervention Methods B (1.5 credit hours)

Specialization in infancy and administration

48 credit hours

To specialize in both infancy and administration, you complete the core child development curriculum plus the following courses. You also complete an internship that gives you experience in both areas.

- I392 Infant/Toddler Screening and Assessment (3 credit hours)
- I397 Prevention/Early Intervention Methods A (1.5 credit hours)
- I398 Prevention/Early Intervention Methods B (1.5 credit hours)
- A308 Administration of Early Childhood Programs (4 credit hours)

Dual degree program: M.S. in child development and M.S.W. in clinical social work

86 credit hours

Infants and young children and their families are currently the fastest growing populations in the child welfare and mental health systems. At the same time, an explosion of neurobiological, behavioral, and social sciences research has led to new possibilities and promise for early intervention. National emphasis on early childhood programs, new diagnostic classifications and evidence-based treatments, and dramatic demographic and socioeconomic shifts in the population all call for a new kind of social services professional.

Erikson's dual degree program—the first of its kind in the country—is the ideal preparation for the professional who wants to advocate for and address the complex needs of vulnerable children and families in infant or child mental health, school, child welfare, child development, family support, pediatric/medical, and early intervention settings. Offered in collaboration with Loyola University Chicago's School of Social Work, the program combines theoretical, clinical, and practical training in child development in the context of culture, with knowledge of the structure and functions of social service systems.

To earn both degrees, you must complete three years of course work, including two internships. The first academic year focuses on child development; the second year of studies includes both child development and social work courses with a two-semester field instruction/internship with young children and their families. In the final year, you complete the social work course requirements and a second field instruction in social work.

The 37-credit-hour master's in child development portion of the program includes core courses, special sections of internship and seminar ("Field Instruction" and "Supervision Seminar"), and two summer courses taught jointly by Erikson and Loyola faculty. Students typically take the Erikson comprehensive examination

and receive their degree after having completed the child development portion of the program in the second year of study.

While most students complete both degrees in three years, there is a four-year option.

Erikson requirements (37 credits, which includes the joint requirements)

- C410 Social and Historical Perspectives on Early Care and Education (3 credit hours)
- C421 Human Development I: Psychosocial Development in Infancy and Childhood (3 credit hours)
- C422 Human Development II: Psychosocial Development from Early Adolescence through Adulthood (3 credit hours)
- C425 Physical Growth and Development (3 credit hours)
- C426 Development of Cognition, Language, and Play I: Cognitive Development (3 credit hours)



- C427 Development of Cognition, Language, and Play II: Language Development (3 credit hours)
- C432 Family and Culture (3 credit hours)
- C439 Child Assessment (2 credit hours)
- D440 Field Instruction I (2 credit hours)
- D441 Field Instruction II (2 credit hours)
- D452 Supervision Seminar I (3 credit hours)
- D453 Supervision Seminar II (3 credit hours)

Joint requirements (4 credits)

- SOWK 500E Human Behavior in the Social Environment I (1 credit hour)
- D413 The Child and the Law (3 credit hours)

Loyola requirements (49 credits, in addition to the joint requirements listed above) For information about Loyola requirements and course descriptions, visit www.luc.edu/socialwork.

- SOWK 507 Social Welfare and Social Work (3 credit hours)
- SOWK 509 Policies and Strategies for Community Interventions (3 credit hours)
- SOWK 503 Social Work with Individuals and Families I (3 credit hours)
- SOWK 504 Social Work with Individuals and Families II (3 credit hours)
- SOWK 502 Ethnicity, Race, and Culture (3 credit hours)
- SOWK 505 Social Work with Small Groups I (3 credit hours)
- SOWK 501 Human Behavior in the Social Environment II (3 credit hours)
- SOWK 506 Methods of Social Work Research (3 credit hours)
- SOWK 606 Practicum in Research (3 credit hours)
- SOWK 612 Family Diagnosis and Treatment (3 credit hours)
- SOWK 620 Clinical Social Work Practice with Children (3 credit hours)
- SWFI 630 & 630-S Field Instruction III (2 credit hours)
- SWFI 631 & 631-S Field Instruction IV (2 credit hours)
- Policy Elective (3 credit hours)
- Social Work Electives (9 credits total)

Specialization in infancy

92 credit hours

To specialize in infancy as part of Erikson's master's in child development, you must complete the core child development curriculum plus three additional topical courses and complete an internship in a setting that serves infants and their families. If you seek credentialing in early intervention, you will need to complete an internship at an early intervention or diagnostic site.

- I392 Infant/Toddler Screening and Assessment (3 credit hours)
- I397 Prevention/Early Intervention Methods: A (1.5 credit hours)
- I398 Prevention/Early Intervention Methods: B (1.5 credit hours)

Specializations offered by Loyola

Loyola University Chicago offers five specializations within its MSW program: children and families, schools, mental health, health, and leadership and development in social services. For more information on these specializations, visit www.luc.edu/socialwork.

M.S. in early childhood education leading to initial Type 04 teacher certification

42 credit hours

Erikson's teacher certification program—among the first in Illinois to be approved under the standards-based reform effort—prepares you to teach young children from birth through third grade and receive the Illinois type 04 early education teacher certification. The program sets a high standard, presenting the latest findings and theories in child development while engaging teacher candidates in critical and reflective thinking about their role and impact on the lives of young children and their families in schools.

Teacher candidates take a combination of courses in child development and early childhood education, plus teacher preparation courses and methods seminars that meet the state's certification requirements. The program can be completed over two or three years.

Prerequisites

- T414 Key Concepts in Teaching and Learning in the Disciplines for the Early Childhood Curriculum (2 credit hours; prerequisite for admission to teacher candidacy)

Course work

- T408 Foundations of American Schooling and Bilingual Education (3 credit hours)
- C421 Human Development I: Psychosocial Development in Infancy and Childhood (3 credit hours)
- C425 Physical Growth and Development (3 credit hours)
- C426 Development of Cognition, Language, and Play I: Cognitive Development (3 credit hours)
- C427 Development of Cognition, Language, and Play II: Language Development (3 credit hours)
- C432 Family and Culture (3 credit hours)
- T461 Assessment for Classroom Teachers (2 credit hours)
- T438 Children with Special Needs and Diverse Abilities (2 credit hours)

Internship, tutorial, and seminar

- T466 and T467 Proseminar for Teacher Candidates (0 credit hours)
- T412 Preschool Curricular Approaches in Diverse and Inclusive Settings (2 credit hours)
- T404 Teaching and Learning in Diverse and Inclusive Settings: Science and Social Studies (2 credit hours)
- T405 Teaching and Learning in Diverse and Inclusive Settings: Reading and Writing (2 credit hours)
- T406 Teaching and Learning in Diverse and Inclusive Settings: Mathematics (2 credit hours)
- T456 Integrative Seminar: Instructional Techniques (2 credit hours)
- T457 Integrative Seminar: Classroom Management (2 credit hours)
- T446 and T447 Internship, Student Teaching, and Tutorial I and II (3 credit hours each semester)

Teacher candidates must be available for daytime study and student teaching during their internship year. Student teaching is a full-time, 10-week commitment during spring semester. When not student teaching, candidates spend nine hours per week in the internship and have a biweekly tutorial.

You must also complete 150 clock hours of field experience and participation in early childhood programs, as follows:

Infants/Toddlers	25 hours
Special Education	25 hours
Preschool/Kindergarten	50 hours
Primary Level	50 hours

Teacher candidates generally complete these hours in conjunction with course assignments.

There are several additional requirements set by the Illinois State Board of Education to qualify for the Type 04 early childhood teaching certificate. These include the Illinois Test of Basic Skills, a prerequisite for admission to teacher candidacy; the Illinois Test for Early Childhood, which teacher candidates must pass prior to their yearlong student teaching placement;

and the Illinois Assessment of Professional Teaching Standards, which candidates take upon completion of course requirements. In addition, Erikson's certification officer reviews transcripts of all prior undergraduate and graduate course work, along with previous professional experiences, to verify that candidates have the requisite content knowledge in math, science, U.S. history, and U.S. government. Competence in other content areas, including English language arts, social sciences, physical growth and development, and the fine arts, are assessed based on candidates' performance in Erikson course work.

Specialization in bilingual/ESL

49 credit hours

The demand for early childhood teachers with bilingual and/or English as a second language expertise has never been higher, and it continues to grow. This program, unique in Illinois, responds to the urgent need for more early childhood teachers who can effectively meet the special needs of new language learners in a culturally, linguistically, and developmentally appropriate manner.

To complete this specialization, you take two courses in addition to the core curriculum for the teacher certification program and substitute two bilingual/ESL courses for courses in the standard curriculum. The internship and tutorials focus on teaching in multilingual preschools and classrooms.

The specialization will enable teacher candidates to add the bilingual and/or ESL endorsement through the Illinois State Board of Education.

- B402 Language Development in New Language Learners I (3 credit hours)
- B416 Methods and Materials For Teaching Young English Learners (2 credit hours)
- T462 Assessment of New Language Learners (3 credit hours; taken instead of T461)
- T409 Teaching and Learning in Diverse and Inclusive Settings: Reading and Writing for Bilingual and English Language Learners (3 credit hours; taken instead of T405)

Specialization in early childhood special education

52 credit hours

Early childhood teachers increasingly need to be able to educate students with varying learning abilities, developmental delays, and/or disabilities. Not only are special education teachers in high demand, but growing numbers of these learners are entering inclusive early childhood classrooms.

Erikson's specialization in early childhood special education prepares teachers to meet the needs of students and receive a letter of approval from the Illinois State Board of Education to teach young children (birth through age five) with special needs.

To complete the specialization and earn the letter of approval, you will take four courses in addition to the core curriculum for the teacher certification program. Each course includes a minimum of 15 hours of field experience working with children with special needs and their families.

- S411 Family and Professional Collaboration in Early Childhood Special Education (3 credit hours)
- S412 Assessment of Infants and Preschool-aged Children with Disabilities/Developmental Delay (2 credit hours)
- S413 Communication and Language Development and Disabilities (2 credit hours)
- S410 Curricular and Instructional Methods in Early Childhood Special Education (3 credit hours, meets in fall and spring terms)



Candace Williams

M.S. in Child Development, 2008

M.S.W., Loyola University Chicago, 2009

2009–11 Illinois Early Childhood Fellow,

Positive Parenting DuPage

Now that you've looked at our programs, it's time to look at the admission process. You'll be surprised at how hard we work to make sure we're looking at the whole picture.

If you think about it, it just makes sense. We expect you to consider the whole child. How could we do anything less than look at the whole person?

Applying to Erikson

Each year, we welcome students who show strong academic ability and leadership potential. They come to us with a variety of experiences and represent different cultural, ethnic, racial, and age groups. One of our primary objectives is to provide an educational setting where people learn to recognize, accept, and respect differences in values, attitudes, and learning styles in themselves and in others. We enroll approximately 220 master's degree students, 15 doctoral students, and 60 certificate students. Together, they present the following profile:

Women	96%
Students of color	28%
Average age	30
Age range	21–63
States represented	28
Countries represented (outside U.S.):	8

Accurate as of September 2011.



**Admission | admission@erikson.edu
www.erikson.edu/admission**

Admission criteria

The admission committee reviews each candidate as a whole. Admission criteria include, but are not limited to, the following:

- A bachelor's degree from an accredited institution of higher education with a GPA of at least 2.75 on a 4-point scale;
- A minimum of one year of work and/or volunteer experience in a supervised setting with young children. Two years is preferred;
- Demonstrated suitability for the field of early childhood.

Your experience may be gained over several years through part-time volunteer and/or paid work. Candidates who do not meet the experience requirement may be asked to work in the field while pursuing their degrees.

While most entering students have worked directly with children, no one professional background predominates. Age and cultural backgrounds are similarly varied. Successful applicants have included child care workers and teachers, therapists and social workers, healthcare professionals, and a good number of "none of the above."

Application deadlines

Child life specialization

January 15 (postmark deadline)

Applicants interested in being considered for admission to the child life specialization must submit a complete application, including all supporting documents, by the deadline. Candidates with completed applications will be interviewed in the month of February. Admission decisions will be mailed in the first week of March.

All other master's degree programs

March 1 (priority deadline)

We make admission decisions on a rolling basis. To begin classes in the fall, you should apply by the priority deadline. We will continue to accept applications after the March 1 priority deadline until all spaces are filled. Applicants to the dual degree M.S. in child development/M.S.W. program must also apply to Loyola University Chicago (visit www.luc.edu/socialwork).

Application process

To be considered for admission to a master's degree program, you must submit the following:

- A completed application form;
- Applicant self-disclosure form;
- \$50 nonrefundable application fee;
- Official sealed academic transcripts;
- Three short essays;
- Three letters of recommendation.

An interview with a faculty member is an important and required component of the admission process.

International applicants

In addition to the application materials described above, international applicants must submit official translations of their academic transcripts and records, if the originals are not in English, as well as a course-by-course official credential evaluation by a recognized credential evaluation firm.

Applicants whose native language is not English and/or whose previous education was conducted in a language other than English must take the Test of English as a Foreign Language (TOEFL) or the International English Language Testing System (IELTS) as evidence of proficiency in oral and written English. Test scores must be no more than two years old at the time of admission. Scores from the IELTS General Training exam cannot be accepted.

Financial aid

finaid@erikson.edu

www.erikson.edu/finaid

Erikson awards financial aid in the form of federal loans, need-based grants, and competitive scholarships to approximately three-fourths of its master's students.

Eligibility for financial aid is based primarily on demonstrated financial need. The priority financial aid application deadline is March 1, although we will continue to award financial aid after that date contingent upon availability of funding.

To apply for financial aid, you must

- File the Free Application for Federal Student Aid (FAFSA) at fafsa.ed.gov, and
- Complete the Erikson financial aid application, available at www.erikson.edu/finaid.

We encourage you to begin the financial aid process as soon as possible after January 1.

Competitive scholarships

Erikson offers a limited number of highly competitive, named scholarships to incoming students with demonstrated financial need, strong academic credentials, and a strong commitment to the field of early childhood. Scholarships range in value from \$3,500 to 100 percent of tuition. Students are recommended for consideration

by the admission committee. The scholarship committee reviews the recommended students and awards the scholarships beginning in early March. You must submit a completed FAFSA and Erikson financial aid application in order to be considered for all scholarships.

Erikson grants

Need-based grants, valued at \$500–\$4,000, are awarded annually to master's degree students who demonstrate financial need. Erikson grant awards are awarded on a first-come, first-served basis and are limited by the availability of funds. To be considered for an Erikson grant, you must submit the FAFSA and the Erikson financial aid application.

Stafford and Graduate PLUS Direct Loans

Erikson participates in the William D. Ford Direct Loan program. Eligible students may borrow under three different loan programs: Stafford subsidized loans, Stafford unsubsidized loans, and Graduate PLUS loans. In order to receive federal student loans, a student must meet all of the following criteria:

- Be a U.S. citizen or eligible non-citizen;
- Be accepted to, or continuing in, a degree or certificate program at Erikson Institute;
- Not be in default on a student loan or owe a refund on any federal Title IV financial aid;
- Submit all required federal and/or institutional documentation;
- Maintain satisfactory academic progress as outlined in the Erikson Institute *Bulletin*.

Teacher Education Assistance for College and Higher Education (TEACH) Grant

The TEACH grant program provides up to \$4,000 per year for up to two years (maximum \$8,000) in grants to teacher candidates who

- Are enrolled in the M.S. in early childhood education leading to initial Type 04 certification and bilingual/ESL endorsement;
- Plan to teach full time in high-need subject areas; and
- Plan to teach at schools that serve students from low-income families.



TEACH grant recipients agree to teach for at least four years within eight years of finishing their degree program and to teach high-need subjects in designated schools that serve low-income students. If you do not complete the four-year teaching obligation, your grant will convert to an unsubsidized loan, which you will have to repay with interest calculated back to the date the funds were disbursed.

For more information about the TEACH grant program, visit www.teach-ats.ed.gov.

Federal Work Study

This federally funded, campus-based program offers campus and community-service employment to students demonstrating financial need. Most students work between 10 and 15 hours per week and are generally eligible to earn up to \$4,000 during the academic year. Priority for federal work study awards is given to continuing students who have a Graduate PLUS loan.

Questions?

Ready for the next steps?

Head to www.erikson.edu.

Call us at (312) 755-2250.

Come to an information session,
or schedule a visit.

We look forward to meeting you.

It is the policy of Erikson Institute not to discriminate against any individual on the basis of race, color, religion, national origin, sex, sexual orientation, gender identity, gender expression, marital status, age, disability, or veteran status in matters of admissions, employment, or services or in the educational programs or activities it operates, in accordance with civil rights legislation and institutional commitment. Any alleged violations of this policy should be directed to the Senior Vice President for Academic Affairs and Dean of Faculty.

Erikson Institute reserves the right to change, without notice, any statement in this publication concerning, but not limited to rules, policies, tuition, fees, curricula, and courses.

© 2011 Erikson Institute. All rights reserved. 11-767/3500/ADK/0811

Design: Melissa DePasquale, Kym Abrams Design, and Gerta Sorensen, Sorensen London Design

Cover photography: Kathy Richland

Body photography: Loren Santow

Illustrations: Pablo Bernasconi

Erikson Institute
451 North LaSalle Street
Chicago, Illinois 60654-4510
Tel: (312) 755-2250
Fax: (312) 755-0928
Email: admission@erikson.edu
www.erikson.edu

graduate school in child development
erikson institute