



Erikson Institute

THE EARLY DEVELOPMENT INSTRUMENT



The Erikson EDI Team

The following consultants and Erikson Institute staff contribute on a regular basis to the Early Development Instrument Project



Leanne Beaudoin-Ryan, PhD
Associate Director of Research



Carlos Lopez
GIS Mapper



Tonya Bibbs, PhD, MSW
*Assistant Professor
Erikson Institute*



Geoff Nagle, PhD, MSW, MPH
*President and CEO
Erikson Institute*



Charles Chang, MA
*Vice President for Institutional
Effectiveness and Planning*



Cristina Pacione-Zayas, PhD
*Director of Policy
Policy & Leadership*



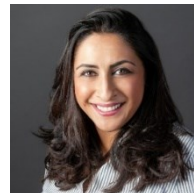
Christy Clarke, MS, MSW
*Program Coordinator
Early Development Instrument
Policy & Leadership*



Bob Spatz
Data Consultant



Rebecca Halperin, MS
*Knowledge Manager
Early Development Instrument
Policy & Leadership*



Jaclyn Vasquez, MS
*Associate Director
Early Development Instrument
Policy & Leadership*



Anna Kong
Graphic Designer



Veronica Vidal
*Associate Director of Internal and External Affairs,
Policy & Leadership*