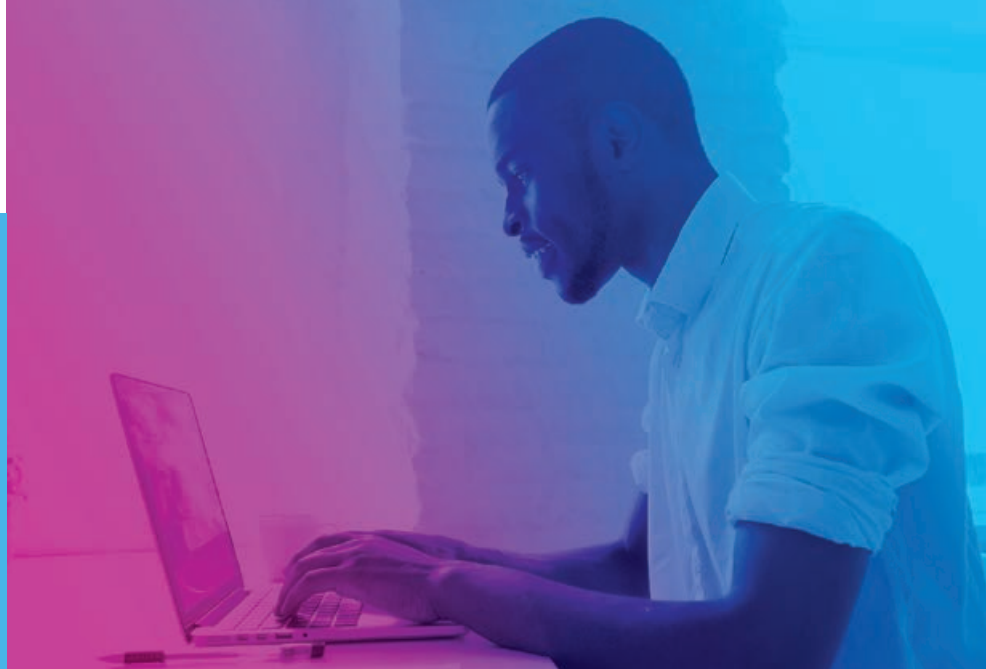


Accelerate your career

with an
**Online Master of Science
in Early Childhood
Education**



Program Specifics

30 Credit Hours

Learning Format:



Online

Program Length:

Full-time: 20 months

Part-time: up to 3 years

Session Start Date:

Fall Term (full-time)

**Fall, Spring or Summer Term
(part-time)**

Concentrations:

- **Bilingual/ESL**
- **Early Childhood STEM**
- **Language and Literacy**
- **Leadership and Advocacy**
- **Social Emotional Learning**
- **Special Education**

Online Master of Science in Early Childhood Education

In this program designed for early childhood professionals, you will gain a deeper understanding of how children age eight and younger grow and learn, and how their families, communities, and the broader early childhood systems affect their development and success.

This non-licensure degree program culminates in a digital Capstone Project that allows you to implement ideas into a real-world setting. All projects will be reflective of your academic and work experiences.

Career Opportunities

Graduates of our Online Master of Science in Early Childhood Education program can consider careers such as: child development specialist, early childhood program director, curriculum coordinator, bilingual/ESL endorsed educator, social and emotional coordinator, principal and prevention specialist.

Why Erikson?

- Core courses in child development with six specialized concentrations to choose from.
- Faculty are experts and scholars in the field.
- Several of our concentrations help prepare you to seek Illinois Gateways to Opportunity Early Care and Education (ECE) credentials and endorsements.
- We offer flexibility with a range of full- and part-time program lengths.
- Access to dedicated advisors, academic writing support, library, career services and student services.

“Studying at Erikson is not just memorizing facts. It is a self-reflective and community-based education that will help stretch your worldview and grow as a person. It is a high quality education that is immediately applicable to my work as a children’s librarian.”

Rebecca Ruidl
Erikson Institute
Online MS in Early
Childhood Education ‘20



We Can Help

We currently offer guaranteed total scholarships: \$15,000 for full-time students, and \$9,000 for part-time students for the entirety of program length who start through Fall 2020. For the most up to date information on scholarships and financial aid, visit www.erikson.edu/finaid. Our dedicated financial aid staff can help you learn about the options available to you.

	Full Time with Scholarship	Part Time with Scholarship
Tuition (30 credits)	\$ 32,700	\$ 32,700
Scholarship	- \$ 15,000	- \$ 9,000
TOTAL COST	\$ 17,700	\$ 23,700

Guaranteed scholarships are available for students who begin their degree program through Fall 2020. Scholarship eligibility is contingent upon admission and completion of a FAFSA. Does not include annual fees. Tuition rates are subject to change. Please refer to www.erikson.edu for details.

The Erikson Approach

Knowledge

Learn how children develop and the complex contextual factors that shape their development.

Practice

Elevate and sharpen your skills through a digital Capstone Project.

Reflection

Develop your reflective practice skills in our Integrative Seminars.

A high-quality education that meets your needs



Program flexibility

Attend full or part time.



Erikson culture

Small class sizes and easy access to faculty foster strong learning relationships.



Faculty expertise

Our professors are scholars and advocates for the benefit of children and families.



100% online

Learn anytime, anywhere, on any device.

Erikson Institute

© 2020 Erikson Institute. All rights reserved.

It is the policy of Erikson Institute not to discriminate against any individual on the basis of race, color, religion, national origin, sex, sexual orientation, gender identity, gender expression, marital status, age, disability, or veteran status in matters of admissions, employment, or services or in the educational programs or activities it operates, in accordance with civil rights legislation and institutional commitment. Any alleged violations of this policy should be directed to the Senior Vice President for Academic Affairs and Dean of Faculty.

Erikson Institute reserves the right to change without notice any statement in this publication concerning, but not limited to, rules, policies, tuition, fees, curricula, and courses.

PROGRAM ACCREDITATIONS AND APPROVALS: Erikson Institute is accredited by the Higher Learning Commission, 230 South LaSalle Street, Suite 7-500, Chicago, Illinois 60604-1411, (800) 621-7440, www.hlcommission.org. Erikson’s Master of Social Work program is accredited by the Council on Social Work Education, www.cswe.org.